

USER REPORT

KMSI

Moore, OK

Rick Norwood, Director of Engineering
Oasis Radio Network

MODEL:
PSIFMV-4C-DA

TECHNICAL SPECIFICATIONS

Frequency / Channel	88.1 MHz
Power Rating	12 kW
ERP	50 kW
Service	Analog
Mount Position	Side
Polarization	Vertical
Directional	Yes
Radomes	White Gelcoat Fiberglass
Deicers	N/A

“88.1 FM KMSI
Moore/Oklahoma City, OK

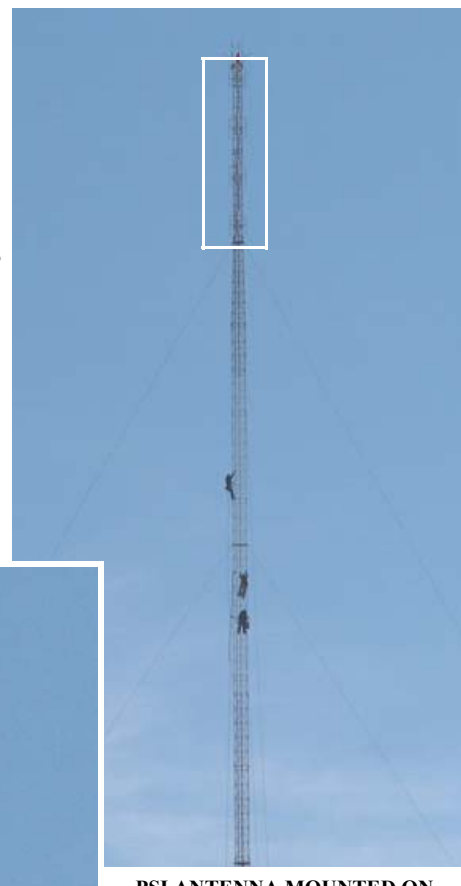
ERP = 50 kW vertical

Our chief engineer Hal Smith is very happy with the performance of this antenna.

PSI is a very good company to work with. Doug Ross is very helpful when you need extra help. I have called him at his home on weekends when we were on a install job. We got the problem handled and the install was a success.

Thank You.”

Rick Norwood, Director of Engineering
Oasis Radio Network



PSI ANTENNA MOUNTED ON THE TOWER.

Corporate Office
P.O. Box 113
719 Pensacola Road
Ebensburg, PA 15931

Phone: 814-472-5540
Fax: 814-472-5676
Email: sales@psibroadcast.com

Propagation Systems, Inc. (PSI)
Quality Broadcast Antenna Systems

